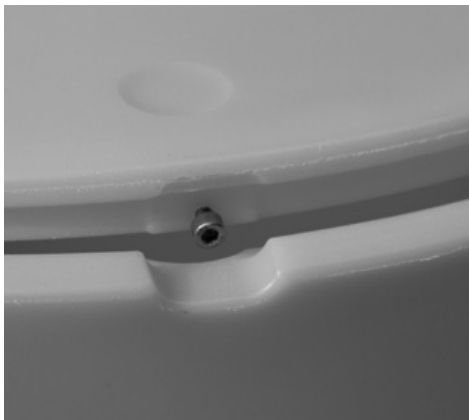


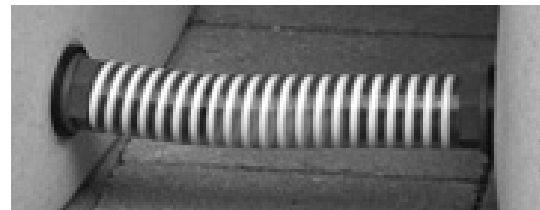


### Childproof lid.



### 5. Tank-to-Tank Connection

If you wish, you may connect two Timberly Water Butts together using the 3P Tank to Tank connection Kit 250 mm (Art. No. 9000326).



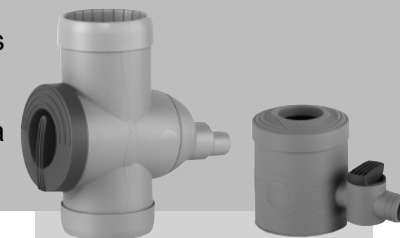
## Instructions

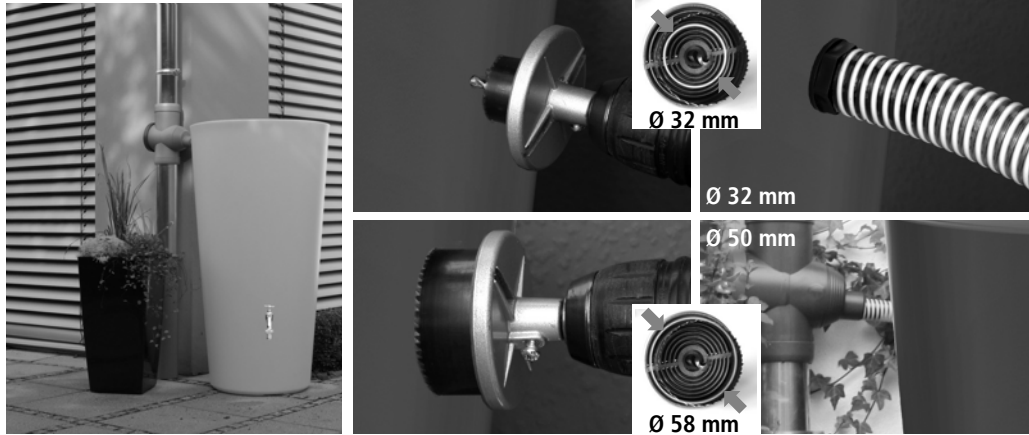
To fill the RainBowl, we recommend using the 3P Filter Collector Universal.

Where the water butt cannot be located within 30 cm of the downpipe, the longer Universal Long Link Kits are available online (Art. No. 9000123U to U5).

The Rainbowl is delivered with a full kit including a brass tap, wall bracket, and screws.

If in any doubt during installation, please consult a professional tradesperson.





### 1. Setting up

Site the Rainbowl on a firm, level surface, adjacent to the downpipe.

Fill the tank with water before attaching the wall bracket to avoid deflection.

Refer to your Filter Collector instructions or other rain diverter instructions. Connecting a tap is optional.

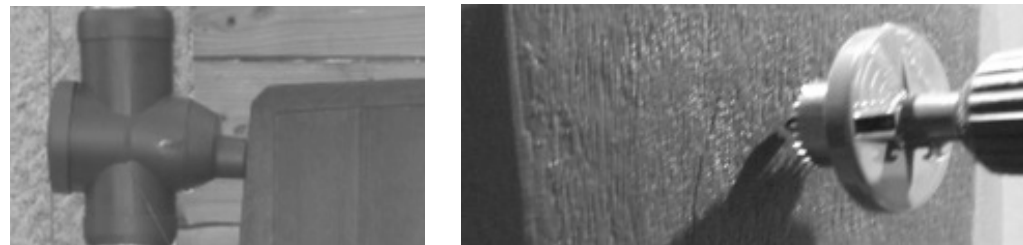
### 2. Fitting an (optional) 3P Filter Collector with Universal Link Kit

#### Other Diverters & Connectors

For the correct hole size, refer to your diverter's instructions. You *may* be able to use the hole saws supplied by 3P. Check this first.

#### Marking Out

Measure down 85 mm from the top of the water butt. This position is ideal for connections of 58 mm.



### Hole Cutter Selection

To fill the water butt with the recommended 3P Filter Collector, select the 58 mm hole saw from the set provided.

### Drilling

Offer the drill to the marked point, proceed to drill the hole at 58 mm. (If you are not fitting a 3P Filter Collector Universal then double-check that you are drilling a correctly sized hole for the connection set that you are using.)

### 3. Connecting the Tap

Screw the 3/4" brass tap provided in the kit into the 3/4" BSP connection thread. If necessary, use PTFE tape when installing the tap to create a more watertight seal and to ensure the tap sits in the correct position.

### 4. Winter Care Precautions

To prevent any damage from being caused, the Timberly must be drained completely and disconnected from the rainwater inlet during freezing weather conditions.