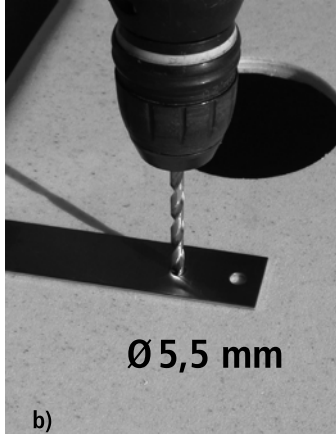


a)



b)

Ø 5,5 mm

## 5. Installing the Wall Bracket

- A) Locate the correct position.
- B) Mark the position and drill.
- C) Attach the bracket to the tank using the nut and bolt supplied.
- D) Attach the bracket to the wall using the screw supplied.

Note: You may need to use alternative fittings depending on your wall type. If in doubt, consult a professional.

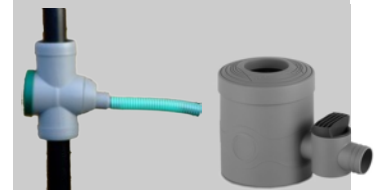
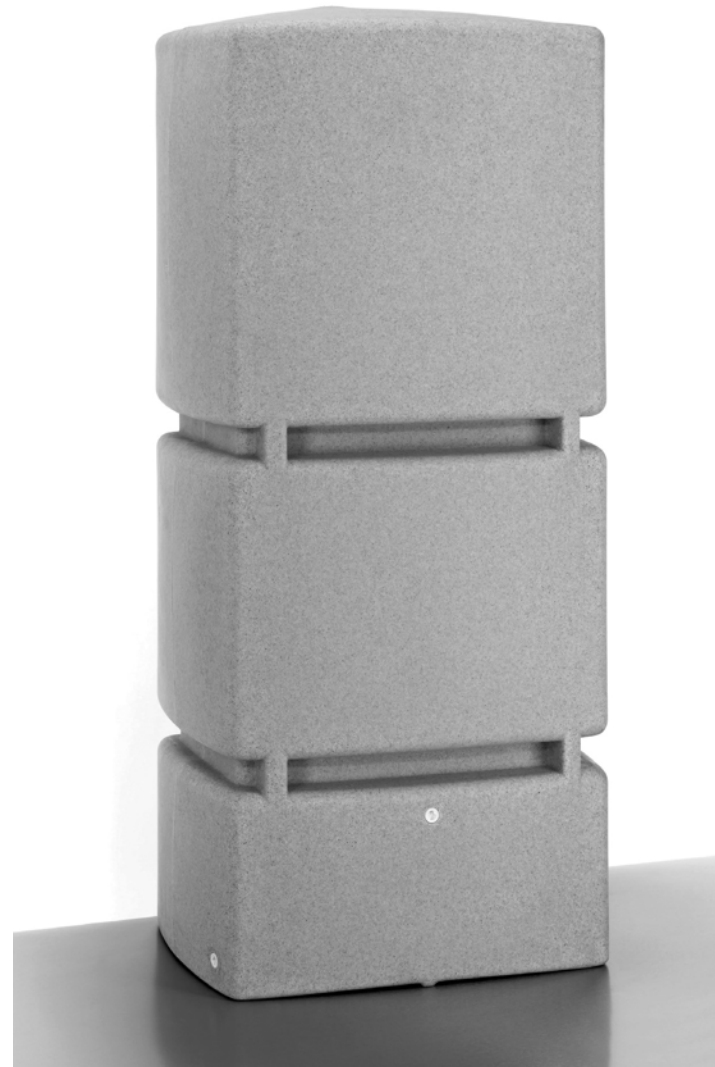
It is possible to **connect two or more tanks** together and even to form an above-ground rainwater system. Use the 250 mm 3P connection set, and consult your supplier if you have any queries or wish to purchase further accessories.



## Instruction Sheet 3P Wall Tank 800 L

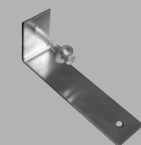
We recommend using the 3P Filter Collector to fill the rainwater tank.

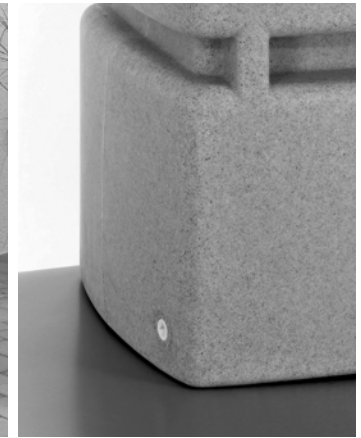
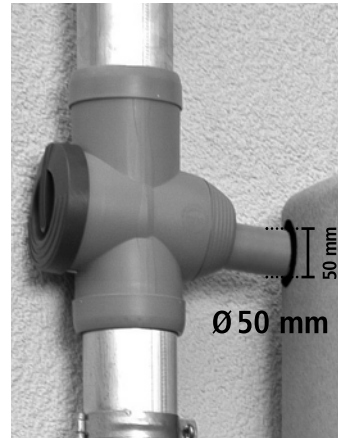
Where the water butt cannot be located within 30 cm of the down pipe, longer Long Link Kits are available online (Art. No. 9000123L, L2, to L5).



The Wall Tank is delivered with a full kit including a plastic tap and hole saw. To fill the Wall Tank, we recommend using the 3P Filter Collector Universal with Universal Long Link Kit.

If in any doubt during installation, please consult a professional tradesman.





### 1. Setting up

Site the Rain Tank on a firm level surface near the downpipe

### 2. Connection to the downpipe

Locate the area to form a hole for connecting the down pipe filter or diverter

Use the hole saw set  
 Take care to select the right size saw

Choose the Ø32 mm hole saw for 32mm connections or Ø 58 mm hole saw for 50 mm connections

The 50 mm size is ideal for push-fit connections a 3P Filter Collector.

Double check sizes before drilling

Refer to the instructions for your selected down pipe filter

### 3. Collecting Water

The side ports can be used to drain down tanks, or to form a system of interconnected tanks.

You can also connect pumps to the side port. We recommend the Steelpump XAJE80P.

Contact your dealer for details.

There is a 3/4" BSP thread at 30cm above tank base to connect a tap or other 3/4" fitting.

### 4. Winter Care Precautions

In times of prolonged freezing weather., the Wall Tank should be drained down completely by removing either of the lower side plugs.