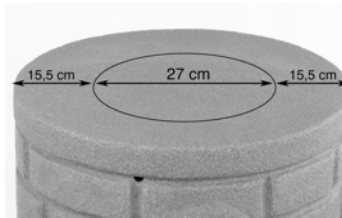
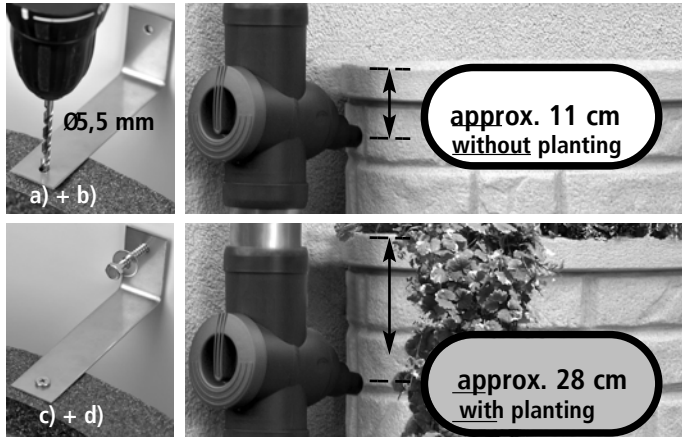


### 3P Arcado

Art. No. 9000640  
Art. No. 9000645  
Art. No. 9000647



#### 5. Childproof lid.



#### 6. Installation of wall bracket

- a) Adjust distance.
- b) Align the holes and drill.
- c) Attach the bracket to the Arcado.
- d) Attach the bracket to the wall using the wall plugs and screws supplied.

It is possible to connect two tanks together. Please use the 3P Connection Set 25 mm Art.-No. 9000326.



### 3P Arcado

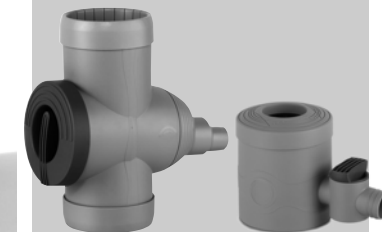
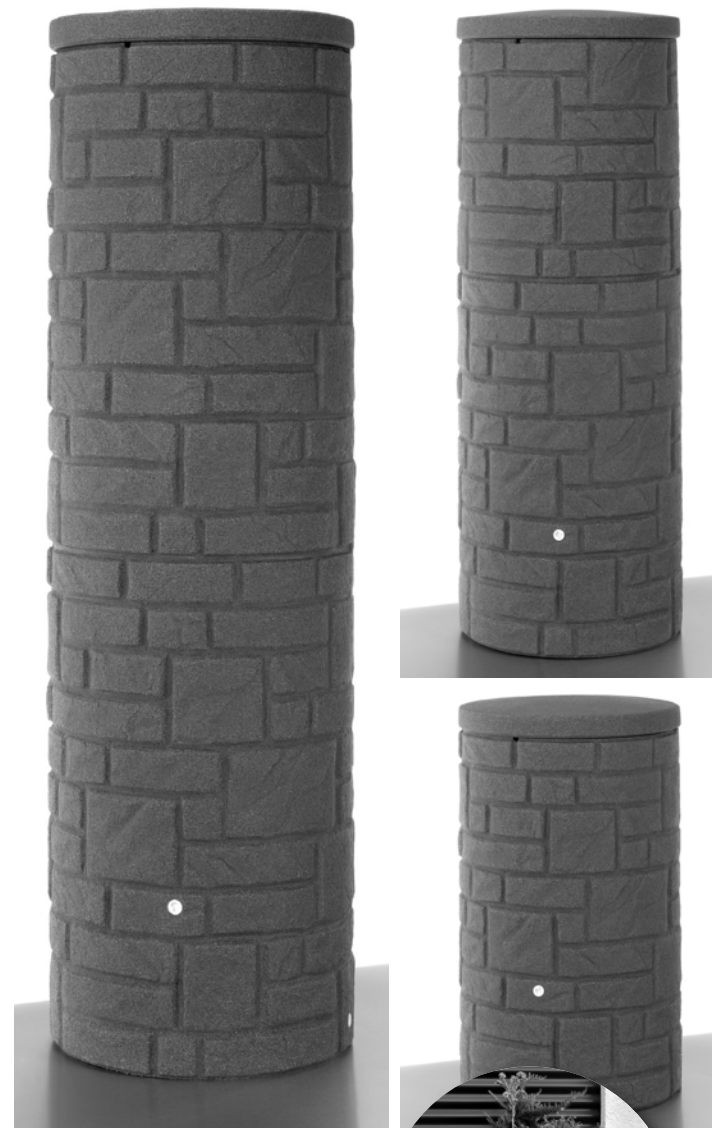
Art. No. 9000640  
Art. No. 9000645  
Art. No. 9000647

#### Instruction sheet Rainwatertank

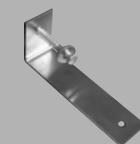
**3P Arcado**  
230 + 360 + 460 litres

To fill the Arcado, we recommend using our 3P Filter Collector Universal.

Where the water butt cannot be located within 30 cm of the down pipe, longer Universal Long Link Kits are available online (Art. No. 9000123U, U2, to U5).



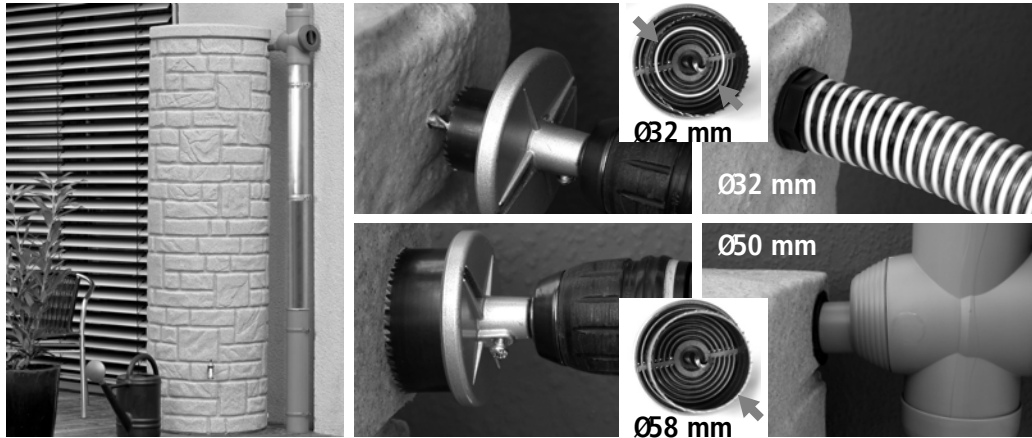
#### Contents



If in any doubt during installation, please consult a professional tradesman.

### 3P Arcado

Art. No. 9000640  
 Art. No. 9000645  
 Art. No. 9000647



#### 1. Setting Up

Site the Arcado on a firm, level surface, adjacent to the downpipe.

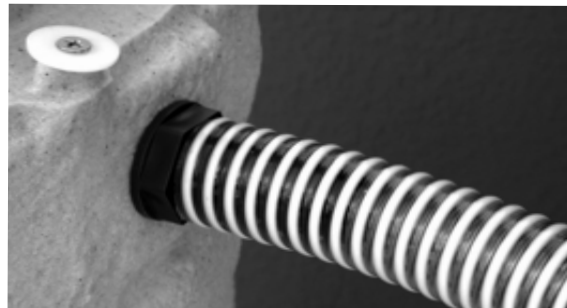
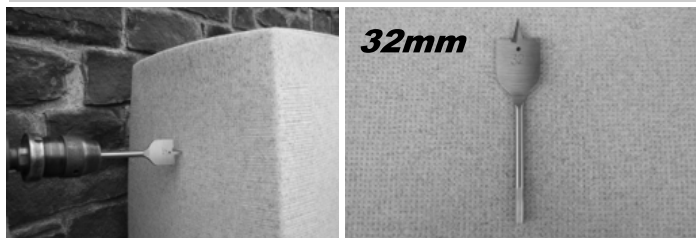
Refer to your Filter Collector or other rain diverter instructions.

#### 2. Connecting to the Downpipe

Please refer to the Filter Collector or your own Rain Diverter instructions. If in any doubt, please consult a professional tradesman.

Use the 32 mm flat bit provided to drill a hole for the Filter Collector Universal.

Measure carefully across from the downpipe to the Arcado to connect the Filter Collector and mark the entry point for the filter (we recommend 9 cm from the top of the butt without planting, and 25 cm from the top with planting).



#### 3. Connecting the Tap

Screw the tap provided in the kit into the 3/4" BSP connection thread.

Use PTFE tape for extra protection, and to make sure that the tap sits in the correct position.

Other 3/4" tap fittings can be used.

### 3P Arcado

Art. No. 9000640  
 Art. No. 9000645  
 Art. No. 9000647

#### 4. Winter Care

The Arcado must be drained completely and disconnected during prolonged periods of freezing weather to prevent damage.

